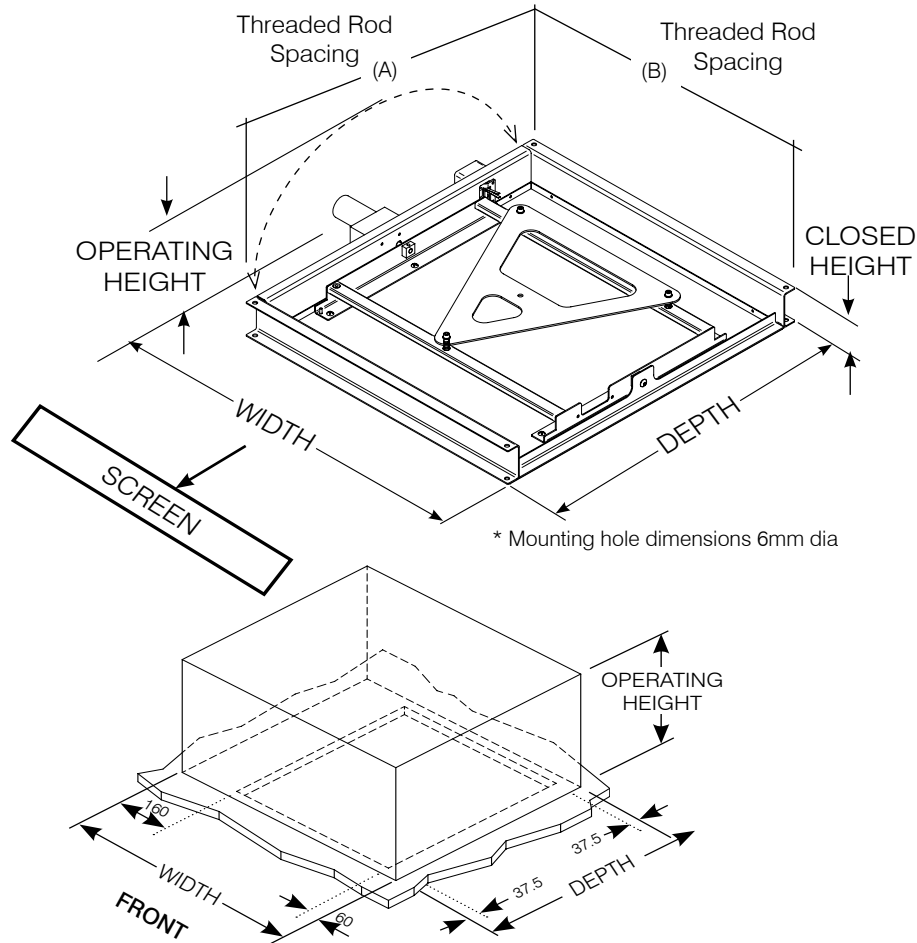


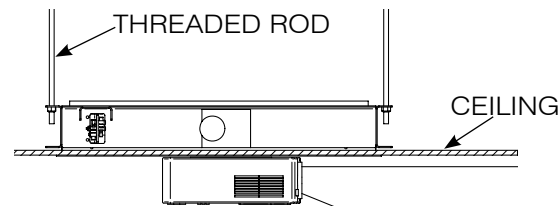
Specifications for LP Morgan Flipper



Features:

- Flipper is capable of lifting projectors up to **9.5kg only**.
- Quiet 12VDC Motor with adjustable limits
- Can be installed through own hole
- Close Contact Control as standard - Plug'n'Play (just wire the switch)
- 12V Trigger, IR Remote, RF Remote and RS232 Upgrades available
- Undercoated 16mm MDF Ceiling Panel - paint to suit room decor
- Aluminium Ceiling Trim and Dustcover Included
- Tilt, Yaw and Pan adjustments available - Projector sits flush with ceiling
- Optional "Multiflip" accessory permits installation into angled ceilings or walls

NOTE: Projector Lens centre may NOT coincide with Flipper centre - align to screen accordingly

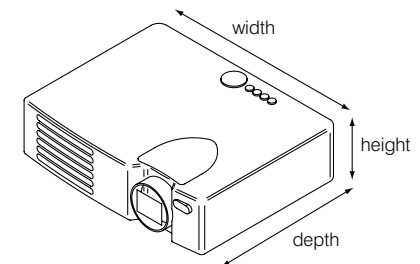
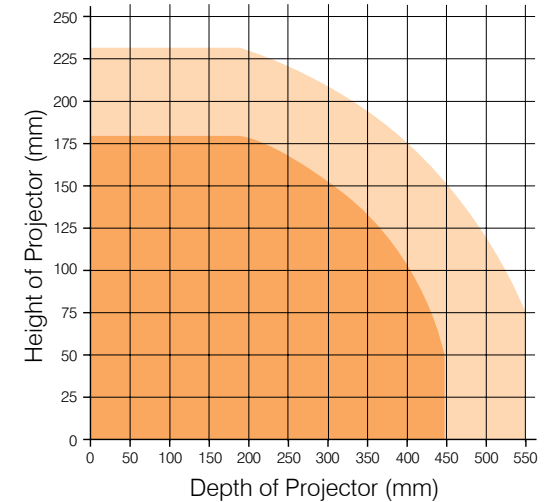


SUGGESTED INSTALLATION:
SUSPENDED CEILING

Projector Measurement Chart

Find the point on the grid below where the projector depth and projector height intersect. If intersection point falls within shaded areas then it is compatible with that size Flipper. In addition, ensure projector is within **width** guidelines listed in the chart.

- A projector will fit into the Standard Flipper if its dimensions are within the dark orange shaded area. **(Maximum projector width 430 mm)**
- A projector will fit into the Large Flipper if its dimensions are within the dark orange shaded and the light orange shaded areas. **(Maximum projector width 530 mm)**



Size	Product Code	Flipper Overall Size		Closed Height	Operating Height	Shipping Size (D x W x H)	Flipper Weight (kg)	Ceiling Panel Size (D x W)	Ceiling Cutout (D x W)	Threaded Rod Spacing	
		Depth	Width							(A)	(B)
Standard	HER20FLIPMS	575	525	100	350	680 x 710 x 140	8	500 x 450	528 x 478	555	500
Large	HER20FLIPML	675	625	100	400	710 x 780 x 140	12	600 x 550	628 x 578	655	600